



FOR LEASE | RETAIL SPACE



#20 3745 Memorial Drive SE

AVAILABLE: Immediately

Calgary, Alberta

Municipal Address

#20 3745 Memorial Drive SE
Calgary, Alberta

Area

5,496.0 sq. ft.

Legal Description

Plan Forest Heights Calgary 8110785 Lot
2

Operating Costs

\$12.55 / sq. ft. (CAM & Tax)

Zoning

Direct Control 4D2010

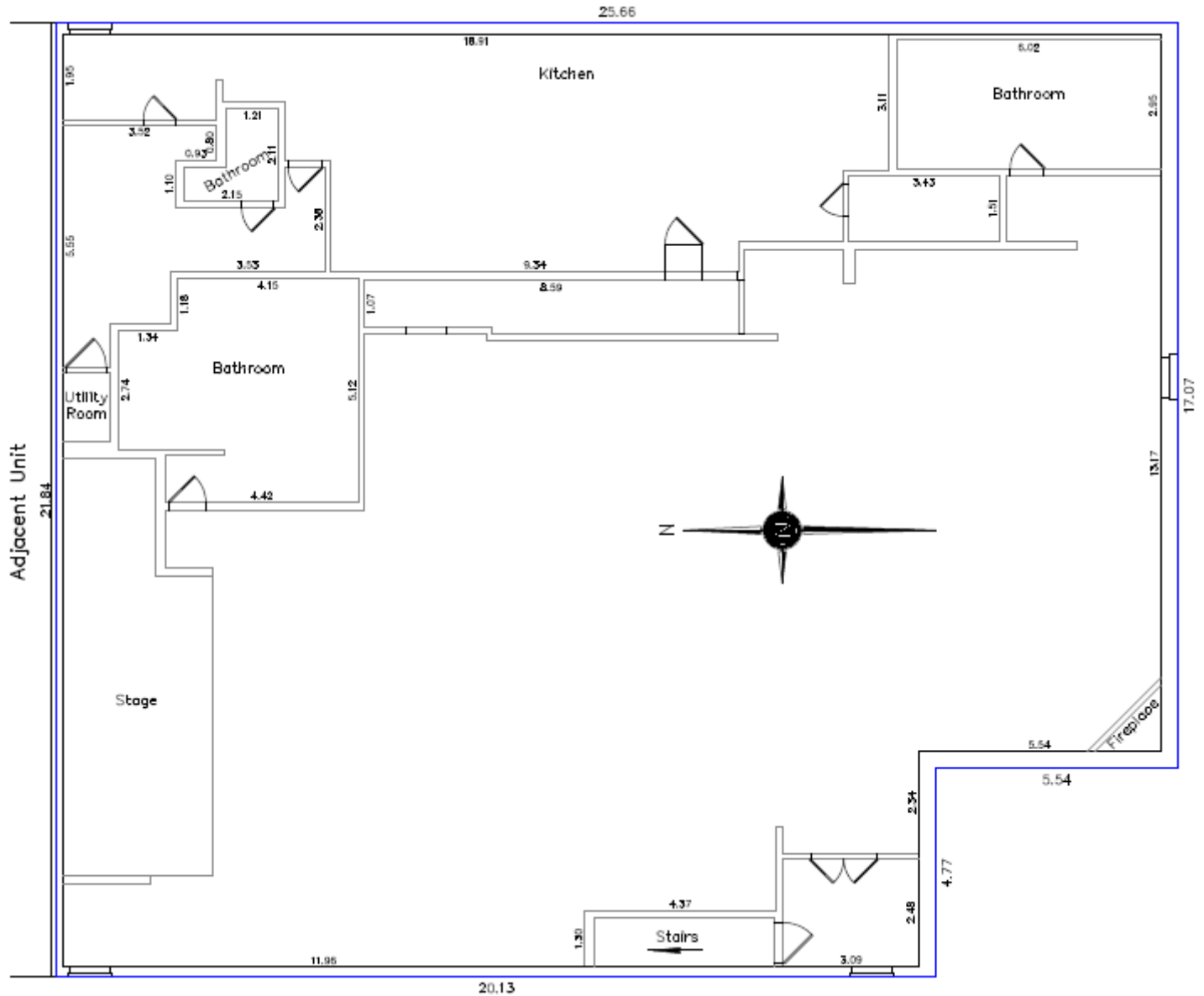
The information contained herein may change and the property removed from the market at any time without prior notice.
It has been obtained from sources believed to be correct but does not form part of any present or future contract.



#20 3745 Memorial Drive SE

AVAILABLE: Immediately

Calgary, Alberta



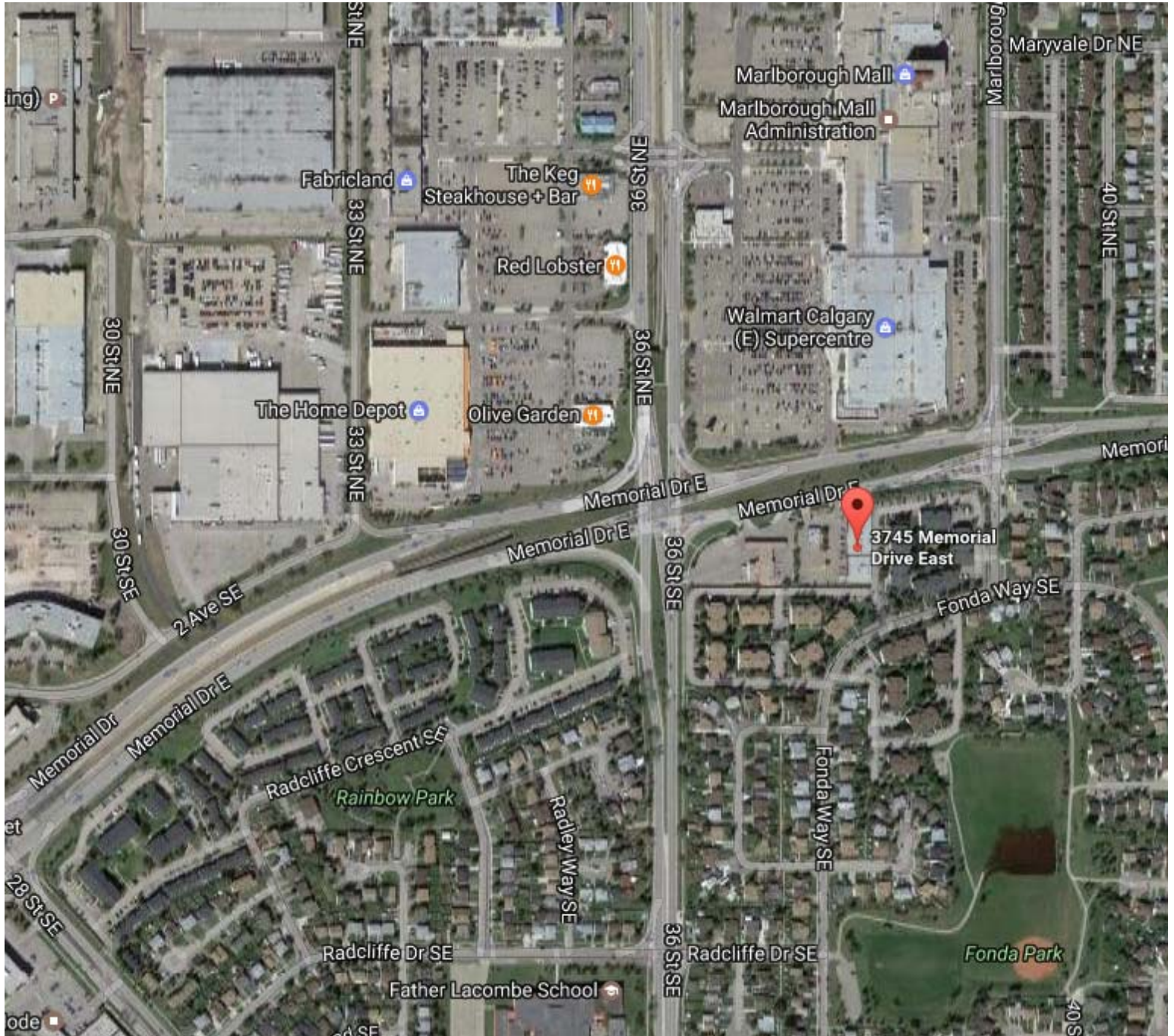
The information contained herein may change and the property removed from the market at any time without prior notice. It has been obtained from sources believed to be correct but does not form part of any present or future contract.



#20 3745 Memorial Drive SE

AVAILABLE: Immediately

Calgary, Alberta



The information contained herein may change and the property removed from the market at any time without prior notice. It has been obtained from sources believed to be correct but does not form part of any present or future contract.